

IHNA Governance and Reporting Structure

Board of Directors

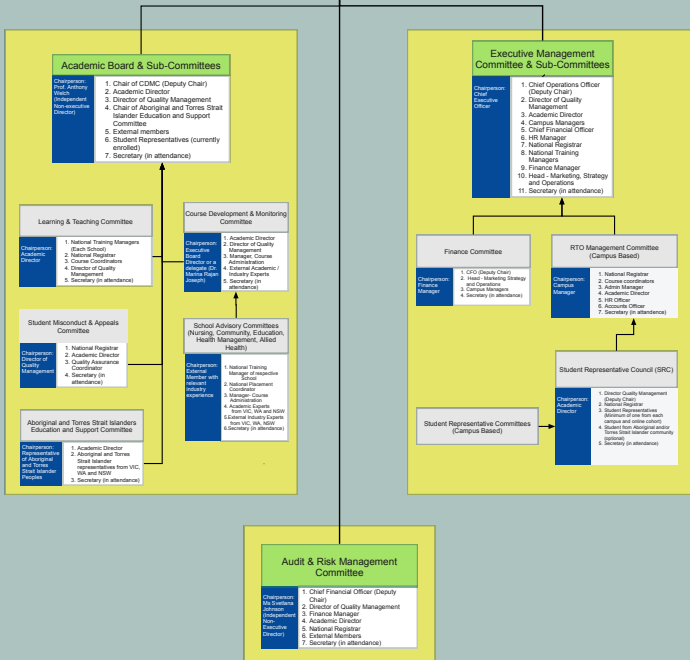
Chairperson
 Dr. Chandana Hewege
 (Independent Non-executive director)

Independent Non-Executive Directors

1. Dr Chandana Hewege
2. Ms Svetlana Johnson
3. Prof. Anthony Welch

Executive Directors

1. Mr Kunnumpurath Bijo



Academic Board & Sub-Committees

Chairperson:
 Prof. Anthony Welch
 (Independent Non-executive Director)

1. Chair of CDMC (Deputy Chair)
2. Academic Director
3. Director of Quality Management
4. Chair of Aboriginal and Torres Strait Islander Education and Support Committee
5. External members
6. Student Representatives (currently enrolled)
7. Secretary (in attendance)

Learning & Teaching Committee

Chairperson:
 Academic Director

1. National Training Managers (Each School)
2. National Registrar
3. Course Coordinators
4. Director of Quality Management
5. Secretary (in attendance)

Student Misconduct & Appeals Committee

Chairperson:
 Director of Quality Management

1. National Registrar
2. Academic Director
3. Quality Assurance Coordinator
4. Secretary (in attendance)

Aboriginal and Torres Strait Islanders Education and Support Committee

Chairperson:
 Representative of Aboriginal and Torres Strait Islander Peoples

1. Academic Director
2. Aboriginal and Torres Strait Islander representatives from VIC, WA and NSW
3. Secretary (in attendance)

Course Development & Monitoring Committee

Chairperson:
 Executive Board Director or delegate (Dr. Mervyn Ryan-Jones)

1. Academic Director
2. Director of Quality Management
3. Manager, Course Administration
4. External Academic / Industry Experts
5. Secretary (in attendance)

School Advisory Committees (Nursing, Community, Education, Health Management, Allied Health)

Chairperson:
 External Member with relevant industry experience

1. National Training Manager of respective school
2. National Placement Coordinator
3. Manager, Course Administration
4. Academic Experts from VIC, WA and NSW
5. External Industry Experts from VIC, WA and NSW
6. Secretary (in attendance)

Executive Management Committee & Sub-Committees

Chairperson:
 Chief Executive Officer

1. Chief Operations Officer (Deputy Chair)
2. Director of Quality Management
3. Academic Director
4. Campus Managers
5. Chief Financial Officer
6. HR Manager
7. National Registrar
8. National Training Managers
9. Finance Manager
10. Head - Marketing, Strategy and Operations
11. Secretary (in attendance)

Finance Committee

Chairperson:
 Finance Manager

1. CFO (Deputy Chair)
2. Head - Marketing Strategy and Operations
3. Campus Managers
4. Secretary (in attendance)

RTO Management Committee (Campus Based)

Chairperson:
 Campus Manager

1. National Registrar
2. Course coordinators
3. Admin Manager
4. Academic Director
5. HR Officer
6. Accounts Officer
7. Secretary (in attendance)

Student Representative Council (SRC)

Chairperson:
 Academic Director

1. National Registrar
2. Director Quality Management (Deputy Chair)
3. National Registrar
4. Student Representatives (Minimum of one from each campus and online cohorts)
5. Student from Aboriginal and/or Torres Strait Islander community (optional)
6. Secretary (in attendance)

Student Representative Committees (Campus Based)

Chairperson:
 Academic Director

1. National Registrar
2. Director Quality Management (Deputy Chair)
3. National Registrar
4. Student from Aboriginal and/or Torres Strait Islander community (optional)
5. Secretary (in attendance)

Audit & Risk Management Committee

Chairperson:
 Ms Svetlana Johnson
 (Independent Non-Executive Director)

1. Chief Financial Officer (Deputy Chair)
2. Director of Quality Management
3. Finance Manager
4. Academic Director
5. National Registrar
6. External Members
7. Secretary (in attendance)